

CASE STUDY

7 World Trade Center

NEW YORK, NEW YORK

At 7 World Trade Center in New York, Henry Bros. Electronics, Inc. integrated hundred of cameras, access points and biometric readers into the first enterprise integration of the Pelco Endura and the Lenel Model OnGuard Access Control system. As a United Technologies company, the Lenel system was also integrated with technology from sister division Otis Elevator in a seamless smart access and elevator collaboration.

The 7 WTC building management and access package includes integrated access control with elevator call system, access control with biometric capabilities and multi-technology card capabilities for turnstiles and other access points. The expanded security and operating efficiency of this additional integration was a key aspect of 7WTC being New York City's first LEED (Low-energy Electron Diffraction) compliant building.

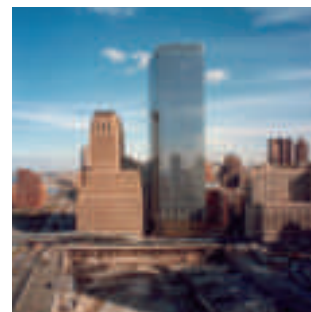
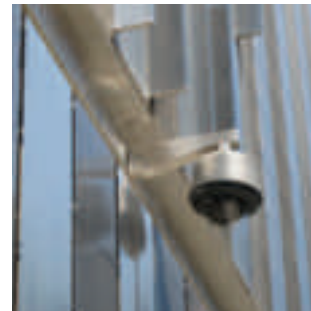
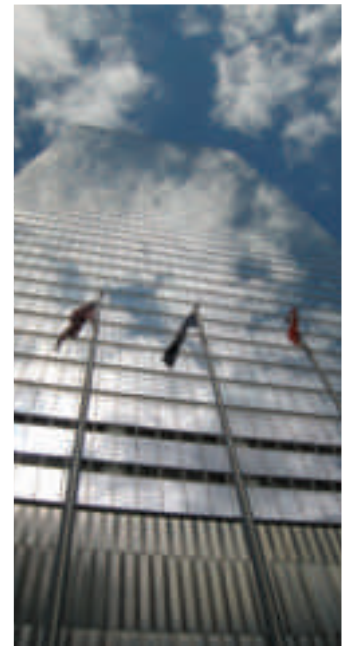
Emergency wireless capabilities designed into 7 WTC included the rebroadcast of all public agency wireless frequencies inside the building; cellular coverage as needed for all carriers; narrowband, filter-enabled DAS (Data Acquisition System) for emergency and cell bands, solving TDI (Transport Data Interface) issues; dual redundant repeaters for emergency communications; and a user-friendly first responder communications control interface. All systems were designed to meet stringent FDNY requirements, and featured the capability to add coverage for tenant build-outs and confined spaces as the design and layout of individual tenant space changes over time.

HBE's work on the site also include an emergency egress system directed tenants towards clear exits and was controllable over a self-healing fiber optic network and that featured a wireless control option. Highly visible and fully integrated command and control reception consoles located in four locations throughout the building tied together all security communication and egress systems.

For HBE, 7 World Trade Center was a challenging undertaking that included coordination of emerging technologies in access, surveillance, command and control, emergency communication, public and first responder safety, cellular coverage and building automation. In a high-profile project made more so by the importance of its location and the need to include the latest technologies in building design, communications and public safety, HBE successfully assembled a comprehensive package of services, capabilities and manufacturers to meet the demands of a range of public and private institutions. The company had to integrate the needs of a variety of stakeholders such as Silverstein Properties, with which it enjoys a long partnership encompassing properties throughout the city.

In addition, HBE worked within the frameworks and specifications of the New York City Fire Department, the city's Emergency Medical Services, its Department of Information Technology and Telecommunications (DOITT), the Port Authority of New York and New Jersey and key building tenants such as Moody's.

7 WTC is an example of Henry Bros.'s ability to provide solutions for advanced physical security, wireless infrastructure and emergency action planning. The company boasts national resources with a strong local presence, as well as a proven track record working with real estate, institutional and transportation clients, as well as public agencies, in one of the most competitive and demanding markets in the world.



HBE HENRY BROS. ELECTRONICS, INC.

perfecting security integration since 1950

17-01 Pollitt Drive Fair Lawn, NJ 07410 • Phone: 201-794-6500 Fax: 201-794-8341 • hbe-inc.com