

FRCC1000 First Responder Control Console



Introduction

The FRCC1000 First Responder Control Console is designed to control and interface with a Motorola Quantar™ Repeater. The FRCC1000 is microcomputer based; it is a stand-alone device and does not require connection to a computer or any external device for normal operation.

The console is on and in stand-by mode at all times. A manual key is used to put the unit into Active mode.

The console can interface to one of two repeaters. Repeater selection is via a toggle switch. There are two pairs of LED's next to the switch to indicate the status of the two repeaters and which repeater is selected.

There are two Push-To-Talk (PTT) controls; one on the handset and one on the front panel. An off-hook switch senses if the handset is removed from the cradle.

The console has a built-in record function, providing a minimum of one hour record time. The outgoing message is recorded when either of the PTT buttons is pressed; if neither is pressed the incoming message is automatically recorded. Simple, intuitive controls are provided for playback. The console has two separate speakers; one for the incoming message and one for playback of the recorded message.

There are three types of input/output signals between the console and the fiber optic transceiver. Bi-directional audio signals are the outgoing and incoming voice messages. Bi-directional RS-232 lines provide serial control inputs and status outputs from the repeater. A switch contact is derived from the PTT function and is used to key the transmitter.

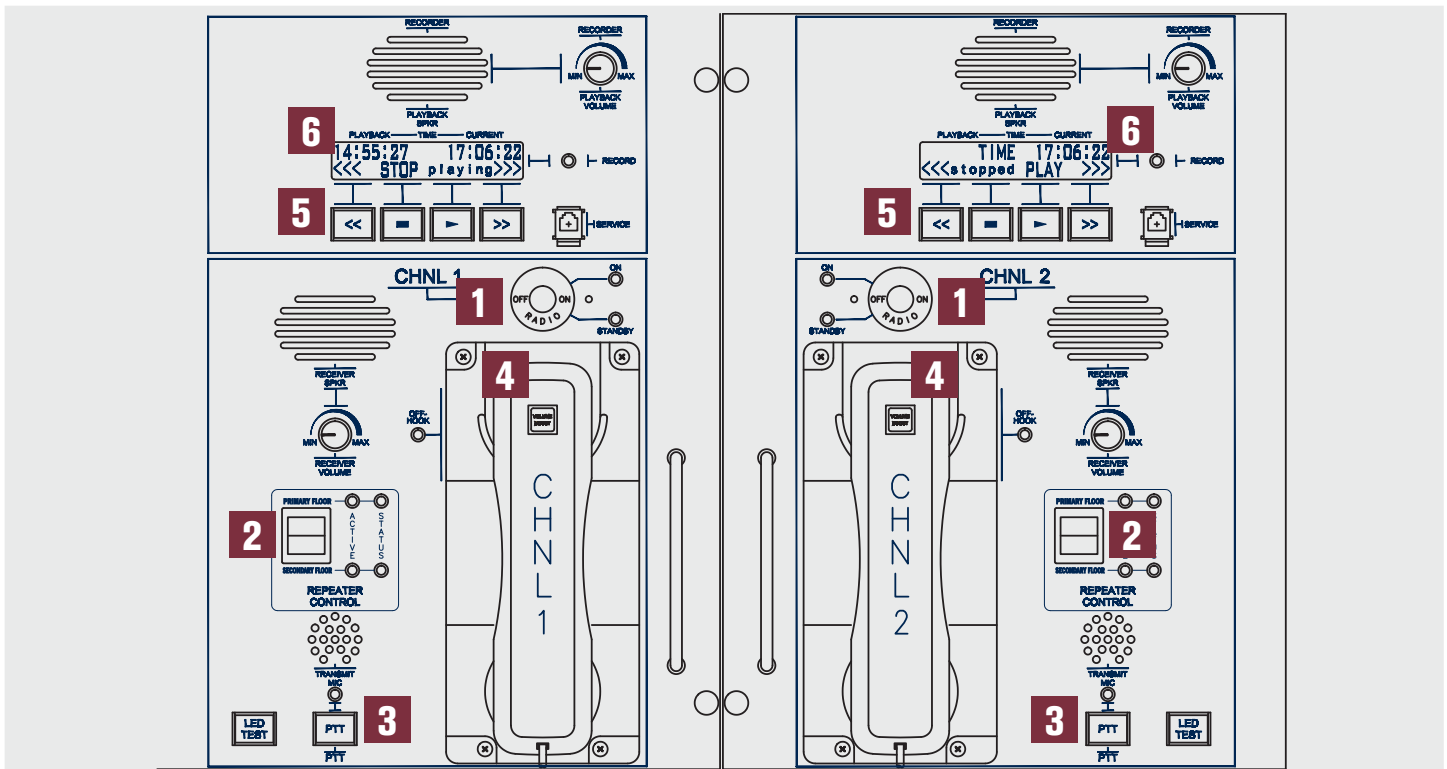
Features

- Simple to use
- Always on or in stand-by mode
- Manual key is used to put the unit into active mode
- Can interface to one of two repeaters
- Repeater selection is via a toggle switch
- 2 Push-To-Talk (PTT) controls
- Built-in record function, providing a minimum of one hour record time
- Contains 2 separate speakers; one for the incoming message and one for playback of the recorded message
- Software configured for application

Applications

- Critical Communication Systems
 - 9-11 Emergency Dispatch Centers
 - Police, Fire and EMS Systems
 - Subway systems
- Two Way Mobile Basestation
- Wherever remote Basestation control and configuration is necessary

Continued



Controls and Indicators

1 Mode Select

Mode select is via a manual key. The console is normally on and in Stand-by mode. The key is used to put the unit into Active mode.

2 Repeater Select Switch

The Repeater Select switch determines which repeater is active. The UP position selects a chosen floor repeater and the DOWN position selects a second chosen floor repeater.

3 Front-Panel PTT Switch

The PTT switch is used to control the direction of the voice message.

4 Handset PTT Switch

The handset PTT switch controls the direction of the voice message; identical function to Front-Panel PTT switch.

5 Mode Control Buttons

There are five mode control buttons located under the display (the display is described below). The primary function of four of these buttons is control of the recorder playback function. Some of these buttons have an alternate function. The fifth button is a MENU select, and is used to temporarily enable the alternate functions. The alternate functions are automatically disabled after 30 seconds, and the buttons revert back to the primary (recorder playback) functions.

6 Display

The unit has a 2-row X 24-column Vacuum Fluorescent Display. This display provides high brightness and wide viewing angle under varying lighting and environmental conditions. Time and Record/Playback status are displayed at all times.

Specifications

Weight	28 lbs.
Power	117 VAC, 35 W
Max. Operating Temp	0° to 70° C
Audio	
Frequency Response	1.0 db, 300 Hz - 3 kHz
Distortion	3% maximum, full output
Speakers	two 3", ohm
Recorder	
Minimum Record Time	1 hour
Functions	Playback, Stop, Forward, Reverse
Elapsed Time Counter	Minutes-Seconds format
RS-232 Specifications	Bi-Directional, RS-232 Levels Baud Rate: default 9600 Baud
Model Number	FRCC1000

Note: Specifications are subject to change without notice.

AIRORLITE
COMMUNICATIONS, INC.
A **KRATOS** Company

Corporate Headquarters:
KRATOS DEFENSE & SECURITY SOLUTIONS, INC.
Bridge Pointe Corporate Centre, 4820 Eastgate Mall, Suite 200
San Diego, CA 92121
Phone: 858-812-7300 • Toll-Free: 866-606-KTOS
17-01 Pollitt Drive Fair Lawn, NJ 07410 • Phone: 201-398-0960 Fax: 201-398-0962 • Sales@airorlite.com